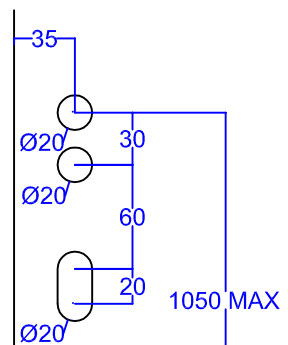


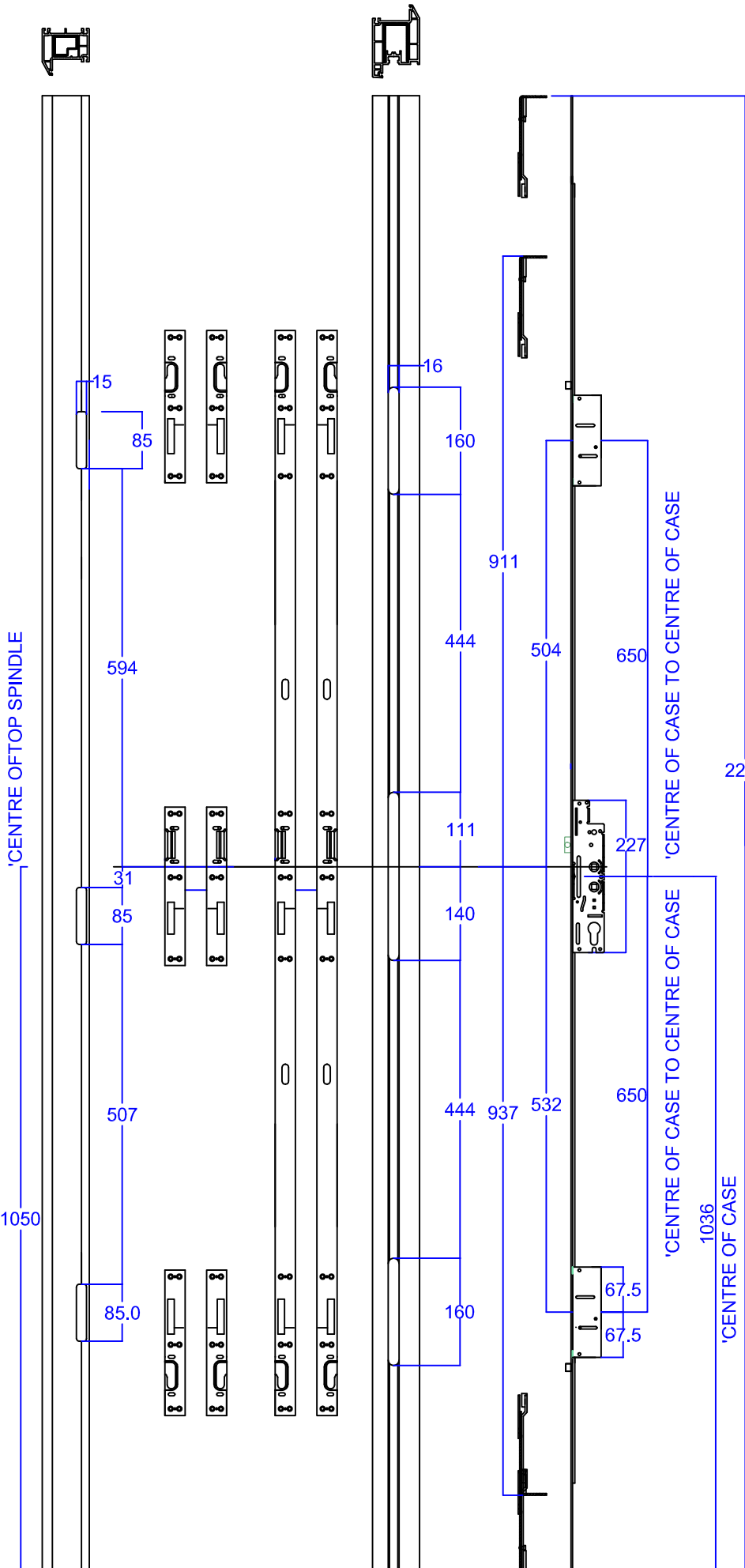
### COMPATIBLE KEEPS

XLk4L7474	One piece keep left hand.
XLK4R7474	One piece keep right hand.
XLK4R	Top and bottom keep set.
XLKCL	Centre keep left hand
XLKCR	Centre keep right hand.
XLKRSB	Residential door shoot bolt keep.
XLKBRSB	Residential door shoot bolt keep buckets fitted.
XLKDSB	Double door shoot bolt keep
XLKBDSB	Double door shoot bolt keep buckets fitted.

### TECHNICAL DATA

- 35mm backset
- Dual spindle 92-92 and 92-62 handle centres.
- Hook and anti-lift bolts top and bottom.
- Rollers above and below top and bottom hooks.
- Centre hook.
- Reversible Latch.
- Shoot bolt compatible.



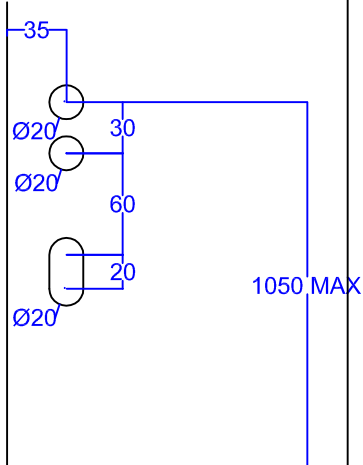


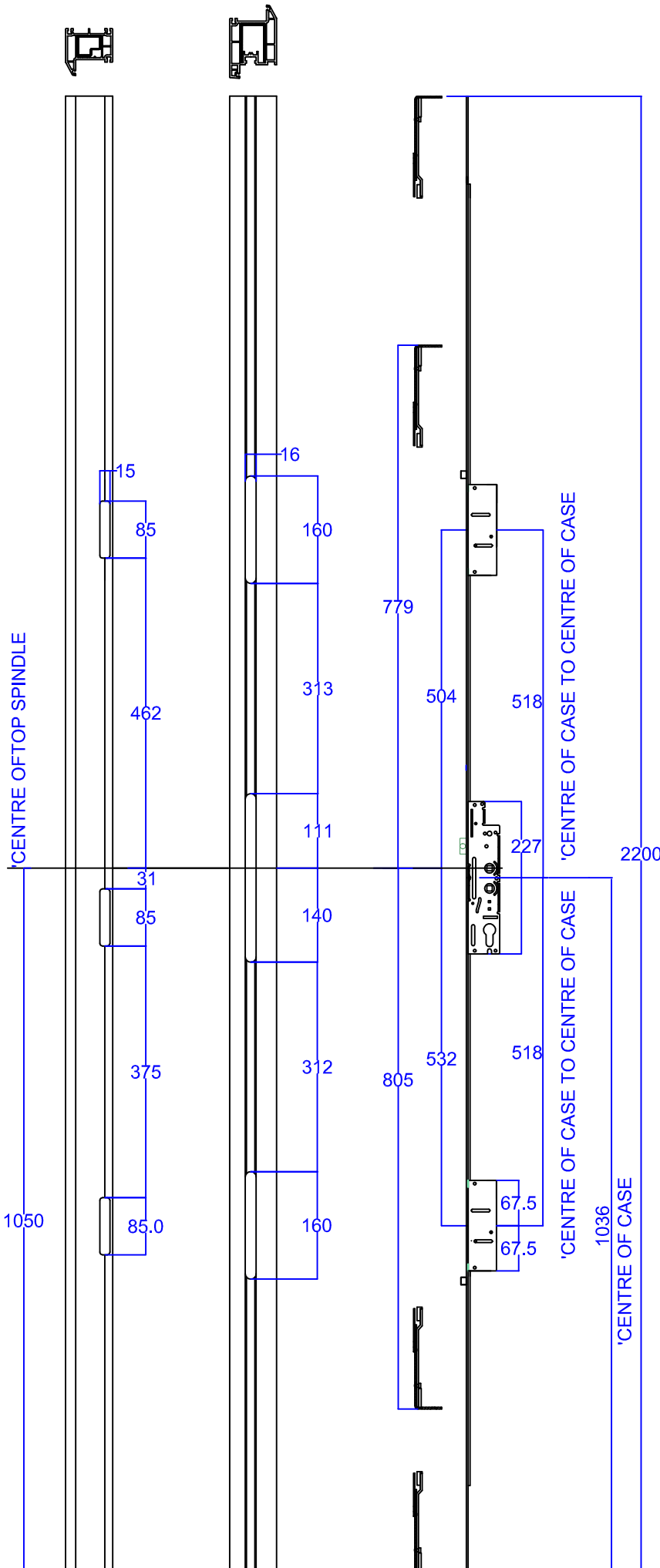
COMPATIBLE KEEPS

- XLk2L650 One piece keep left hand.
- XLK2R650 One piece keep right hand.
- XLK2R Top and bottom keep set.
- XLKCL Centre keep left hand
- XLKCR Centre keep right hand.
- XLKRSB Residential door shoot bolt keep.
- XLKBRSB Residential door shoot bolt keep buckets fitted.
- XLKDSB Double door shoot bolt keep
- XLKBDSB Double door shoot bolt keep buckets fitted.

TECHNICAL DATA

35mm backset  
 Dual spindle 92-92 and 92-62 handle centres.  
 Hook and anti-lift bolts top and bottom.  
 Rollers above and below top and bottom hooks.  
 Centre hook.  
 Reversible Latch.  
 Shoot bolt compatible.



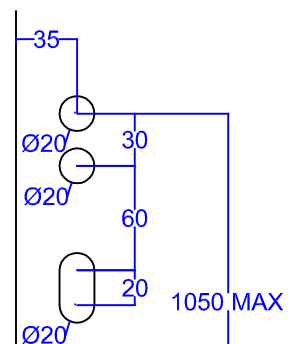


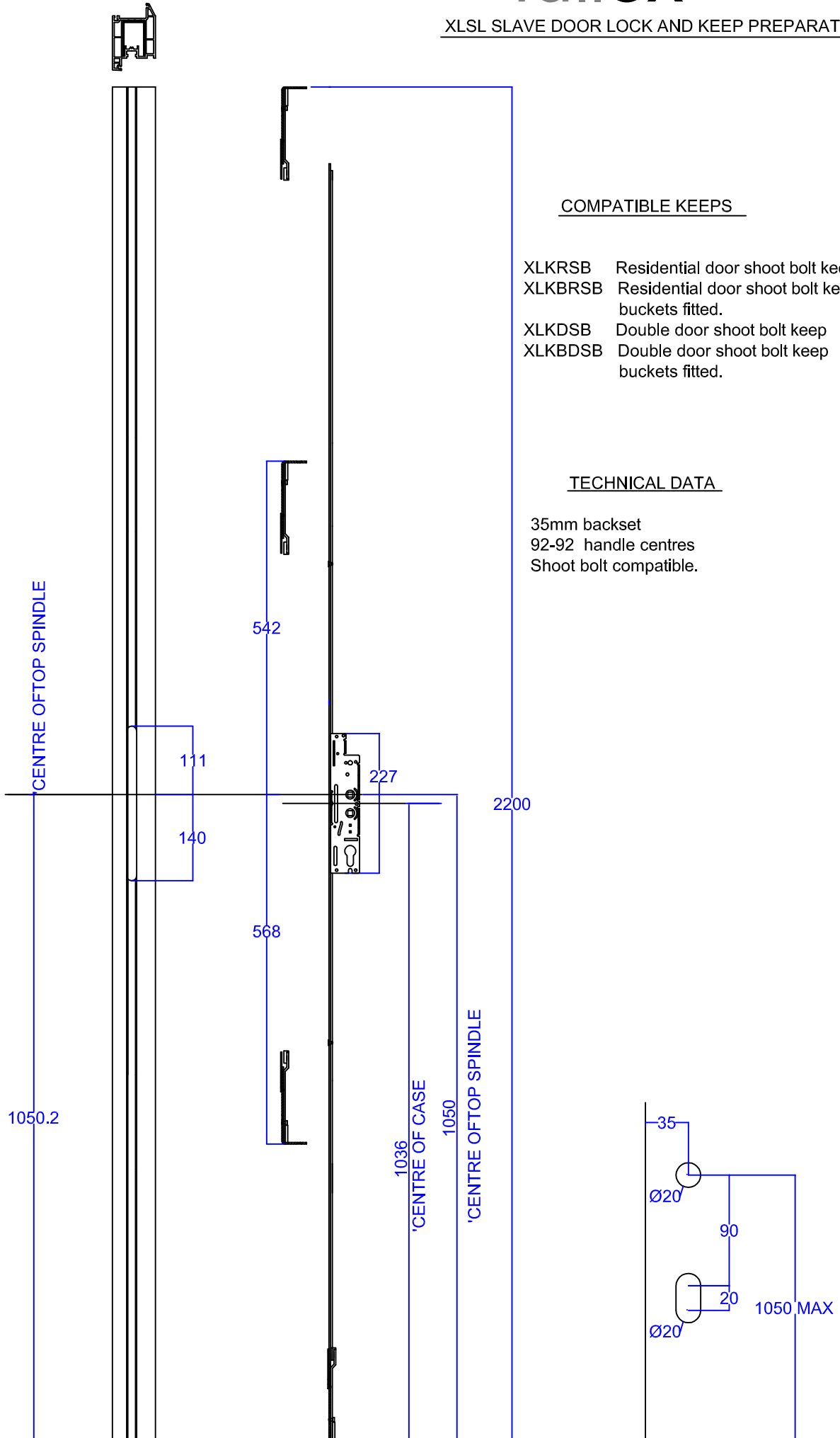
### COMPATIBLE KEEPS

- XLk2L518 One piece keep left hand.
- XLK2R518 One piece keep right hand.
- XLK2R Top and bottom keep set.
- XLKCL Centre keep left hand
- XLKCR Centre keep right hand.
- XLKRSB Residential door shoot bolt keep.
- XLKBRSB Residential door shoot bolt keep buckets fitted.
- XLKDSB Double door shoot bolt keep
- XLKBDSB Double door shoot bolt keep buckets fitted.

### TECHNICAL DATA

- 35mm backset
- Dual spindle 92-92 and 92-62 handle centres.
- Hook and anti-lift bolts top and bottom.
- Rollers above and below top and bottom hooks.
- Centre hook.
- Reversible Latch.
- Shoot bolt compatible.





## XL LOCK INLINE LEVER LOCK OPERATION

### Operation

#### To lock door

Lift handle to its full extent. (Fig 1.)

Turn key or thumb turn one revolution towards door frame. (Fig 2.)

*The door is now locked.*

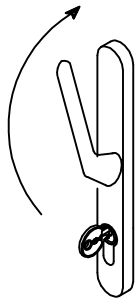


Fig 1.

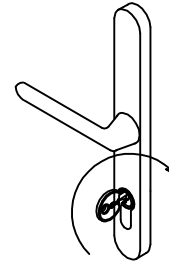


Fig 2.

#### To unlock door

##### From outside

Turn key one revolution away from door frame. (Fig 3.)

Push handle down. (Fig 4.)

##### From inside

Turn key one revolution away from door frame. (Fig 3.)

Push handle down (Fig 4.) and open door.

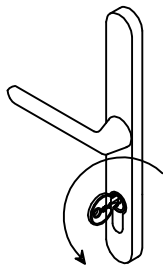


Fig 3.

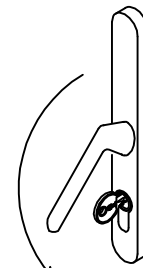


Fig 4.

## XL LOCK OFFSET LEVER LOCK OPERATION

### To lock door

Lift handle to its full extent. (Fig 1.)

Turn key or thumb turn one revolution towards door frame. (Fig 2.)

*The door is now locked.*

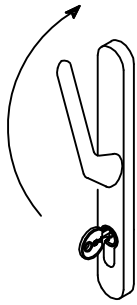


Fig 1.

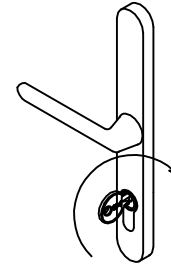


Fig 2.

### To unlock door

#### From outside

Turn key one revolution away from door frame. (Fig 3.)

Push handle down. (Fig 4.)

Turn key once again to withdraw latch and open door.

#### From inside

Turn key one revolution away from door frame. (Fig 3.)

Push handle down (Fig 4.) and open door.

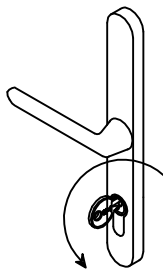


Fig 3.

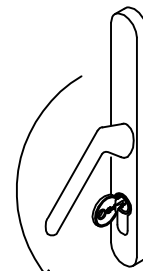


Fig 4.

### Snib Operation

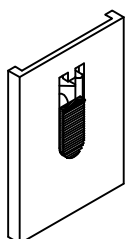
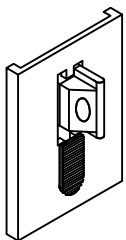
The Snib function allows the latch to be held in the retracted position allowing the door to be closed without engaging the latch.

Please Note. When the door is closed with the Snib engaged the door is not secure and should not be left unattended. This function allows entry through the door from outside without the need to use a key and should only be used if you are able to monitor traffic through the door.

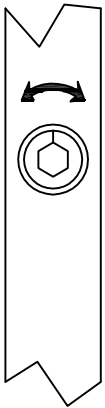
To Operate the Snib.

Push latch in to its full extent push the plastic slide located below the latch up and release latch, the latch will now stay retracted until the snib is released.

Push slide down to release latch.



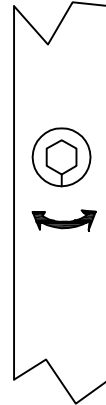
**TOP ROLLER**



To adjust the tightness of the seals of this door.

Rotate the compression rollers using a 5mm AF allen key. Each roller has a setting line stamped into its face in the neutral position. This is set vertically and pointing up for the top rollers and down for the bottom rollers. To increase the compression rotate the roller towards the door seal by no more than 90 degrees. 90 degrees of rotation will increase the compression by 1.5mm. To decrease the compression rotate the roller up to 90 degrees away from the door seal.

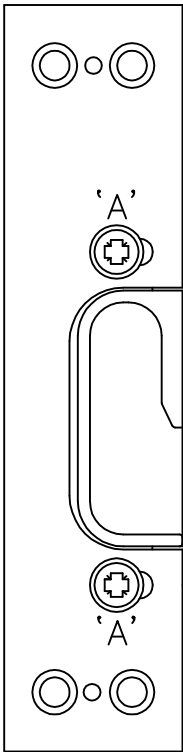
**BOTTOM ROLLER**



Keep adjustment

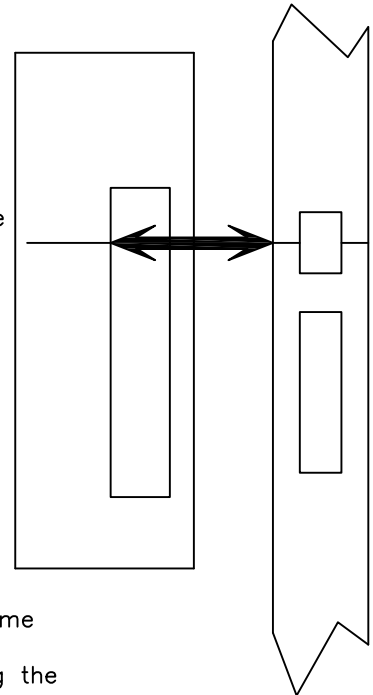
A further plus and minus 3mm of compression can be achieved by adjusting the roller pockets on the keep.

Loosen the two screws 'A' and move the pocket into the keep to gain compression and forward of the keep to reduce the compression.



Lock and keep Alignment

There is a setting line located at each locking point on the lock and adjacent to each keep hook slot. When fitting the keep and installing the door. These lines should be sighted through to ensure they align



Double door frame keep adjustment

Once a double door has been installed the frame keeps should be adjusted. This is achieved by releasing the retaining screws 'B' and adjusting the top plates to the correct position. Once the correct position is achieved two final fixing screws 'C' should be used to secure the plates

